

Telescopic lightweight OV10, 11, 12, 13 telescopic and foldable ramps

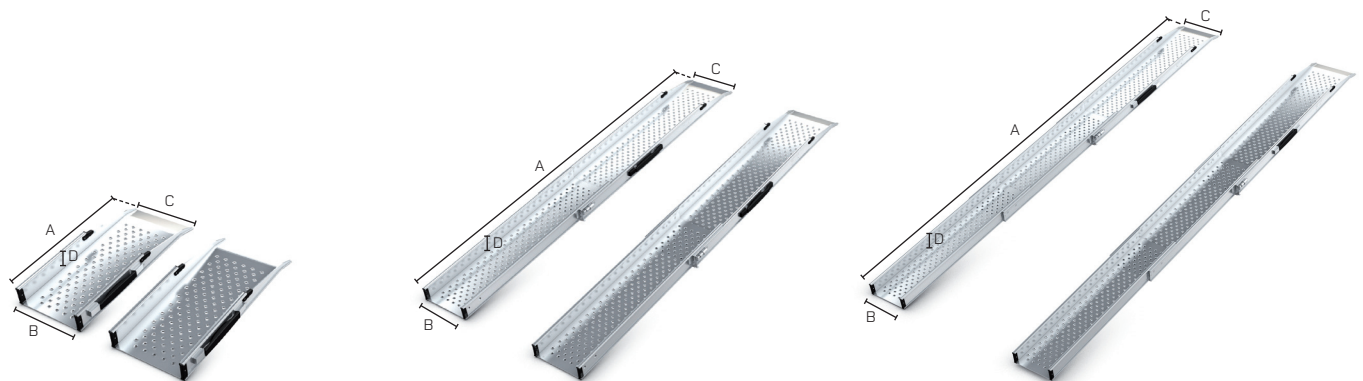
- lightweight telescopic and foldable loading ramp series
- loading capacity up to 500 kg (1102 lbs)
- maximum extended length up to 2900 mm (114.17")

- anodized anti-slip surface
- quick & simple operation



OV10 TELESCOPIC RAMPS			TECHNICAL SPECIFICATIONS															
Code	Description	Electric wheelchair use	Minimum length		Maximum length A		Internal width B		External width C		Side height D		Recommended height (16°)		Loading capacity (SWL*) pair		Weight per piece	
			mm	inch	mm	inch	mm	inch	mm	inch	mm	inch	mm	inch	kg	lbs	kg	lbs
OV10E-1-1180	Ramp - 1part	No	1180	46.46	1180	46.46	210	8.27	236	9.29	60	2.36	330	12.99	500	1102.10	3,4	7.49
OV10E-2-2040	Telescopic ramp - 2 parts	No	1180	46.46	2040	80.31	190	7.48	236	9.29	60	2.36	560	22.05	320	705.34	6,4	14.11
OV10E-3-2900	Telescopic ramp - 3 parts	No	1180	46.46	2900	114.17	170	6.69	236	9.29	60	2.36	800	31.50	260	573.09	9,0	19.84

*SWL calculated for wheelbase 500mm



OV11 TELESCOPIC RAMPS			TECHNICAL SPECIFICATIONS															
Code	Description	Electric wheelchair use	Minimum length		Maximum length A		Internal width B		External width C		Side height D		Recommended height (16°)		Loading capacity (SWL*) pair		Weight per piece	
			mm	inch	mm	inch	mm	inch	mm	inch	mm	inch	mm	inch	kg	lbs	kg	lbs
OV11E-1-55	Ramp - 1part	Yes	550	21.65	550	21.65	210	8.27	236	9.29	60	2.36	150	5.91	540	1190.27	1,6	3.53
OV11E-1-115	Ramp - 1part	Yes	1150	45.28	1150	45.28	210	8.27	236	9.29	60	2.36	320	12.60	500	1102.10	3,5	7.71
OV11E-2-184	Telescopic ramp - 2 parts	Yes	1150	45.28	1840	72.44	190	7.48	236	9.29	60	2.36	510	20.08	360	793.51	6,5	14.33
OV11E-3-253	Telescopic ramp - 3 parts	Yes	1150	45.28	2530	99.61	170	6.69	236	9.29	60	2.36	700	27.56	280	617.18	8,7	19.18

*SWL calculated for wheelbase 500mm



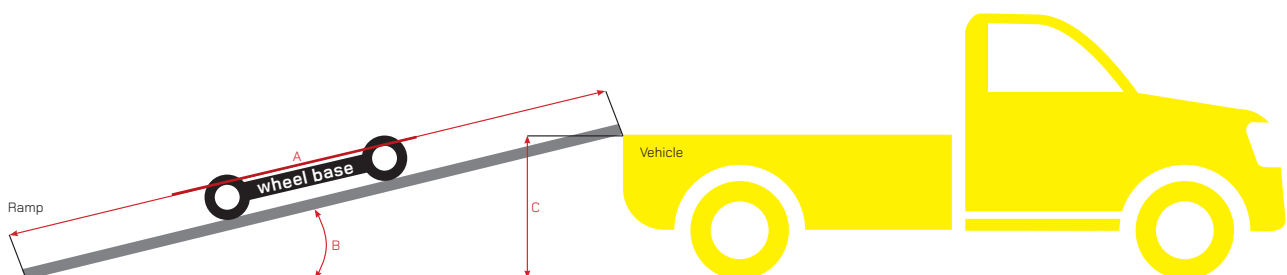
OV12 FOLDABLE RAMPS			TECHNICAL SPECIFICATIONS															
Code	Description	Electric wheelchair use	Minimum length		Maximum length A		Internal width B		External width C		Side height D		Recommended height (16°)		Loading capacity (SWL*) pair		Weight per piece	
			mm	inch	mm	inch	mm	inch	mm	inch	mm	inch	mm	inch	kg	lbs	kg	lbs
OV12E-110	Foldable - 2 parts	Yes	550	21.65	1100	43.31	210	8.27	236	9.29	60	2.36	300	11.81	440	969.85	4,3	9.48
OV12E-154	Foldable - 2 parts	Yes	770	30.31	1540	60.63	210	8.27	236	9.29	60	2.36	420	16.54	400	881.68	5,3	11.68
OV12E-230	Foldable - 2 parts	Yes	1150	45.28	2300	90.55	210	8.27	236	9.29	60	2.36	630	24.80	300	661.26	7,8	17.19

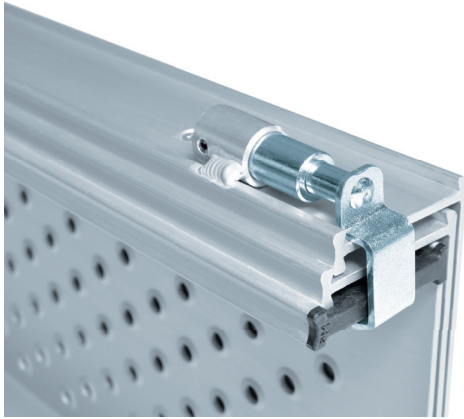
*SWL calculated for wheelbase 500mm



OV13 FOLDABLE TELESCOPIC RAMPS			TECHNICAL SPECIFICATIONS															
Code	Description	Electric wheelchair use	Minimum length		Maximum length A		Internal width B		External width C		Side height D		Recommended height (16°)		Loading capacity (SWL*) pair		Weight per piece	
			mm	inch	mm	inch	mm	inch	mm	inch	mm	inch	mm	inch	kg	lbs	kg	lbs
OV13E-144	Foldable and telescopic - 3 parts	Yes	550	21.65	1440	56.69	190	7.48	236	9.29	60	2.36	400	15.75	400	881.68	5,6	12.34
OV13E-210	Foldable and telescopic - 3 parts	Yes	770	30.31	2100	82.68	190	7.48	236	9.29	60	2.36	580	22.83	320	705.34	7,8	17.19
OV13E-324	Foldable and telescopic - 3 parts	Yes	1150	45.28	3240	127.56	190	7.48	236	9.29	60	2.36	890	35.04	220	484.92	11,0	24.25

*SWL calculated for wheelbase 500mm





OV10,11,13 Smart locking system
Series spring loaded pin with zinc-chromed hook to secure the telescopic part



OV10,11,12,13 Comfort handling bar
Series ergonomic handling bar for easy manipulation



Regular cut
OV10

Chamfered cut
OV11, 12, 13

OV10,11,12,13 Regular or chamfered cuts
Series regular cut design for manual wheelchair use, chamfered cut design for electric (low profile) wheelchair use



OV10,11,12,13 Friction and scratch protective fixed rubber pad
Series available for both regular and chamfered (low profiled wheel) cut designs