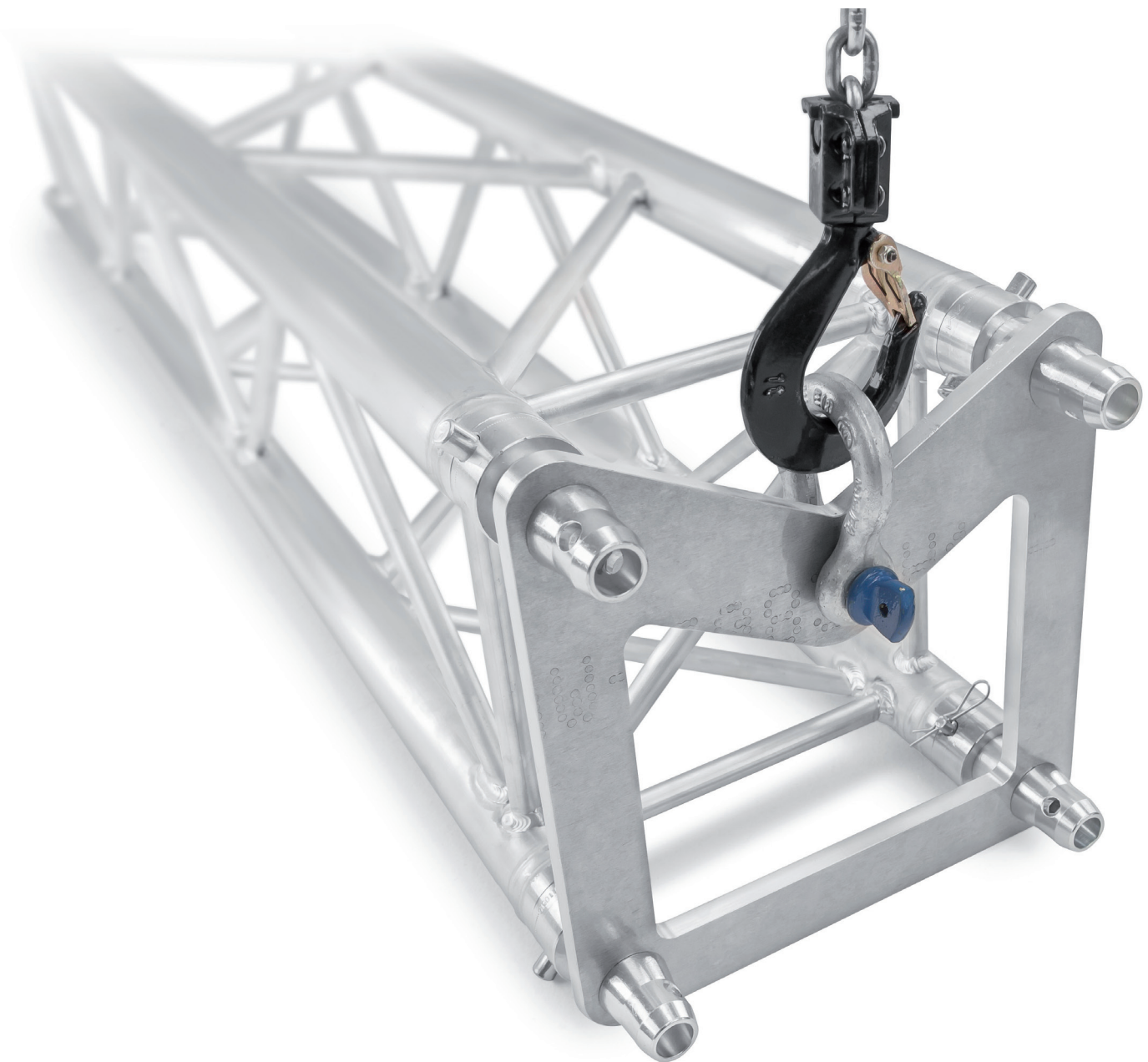


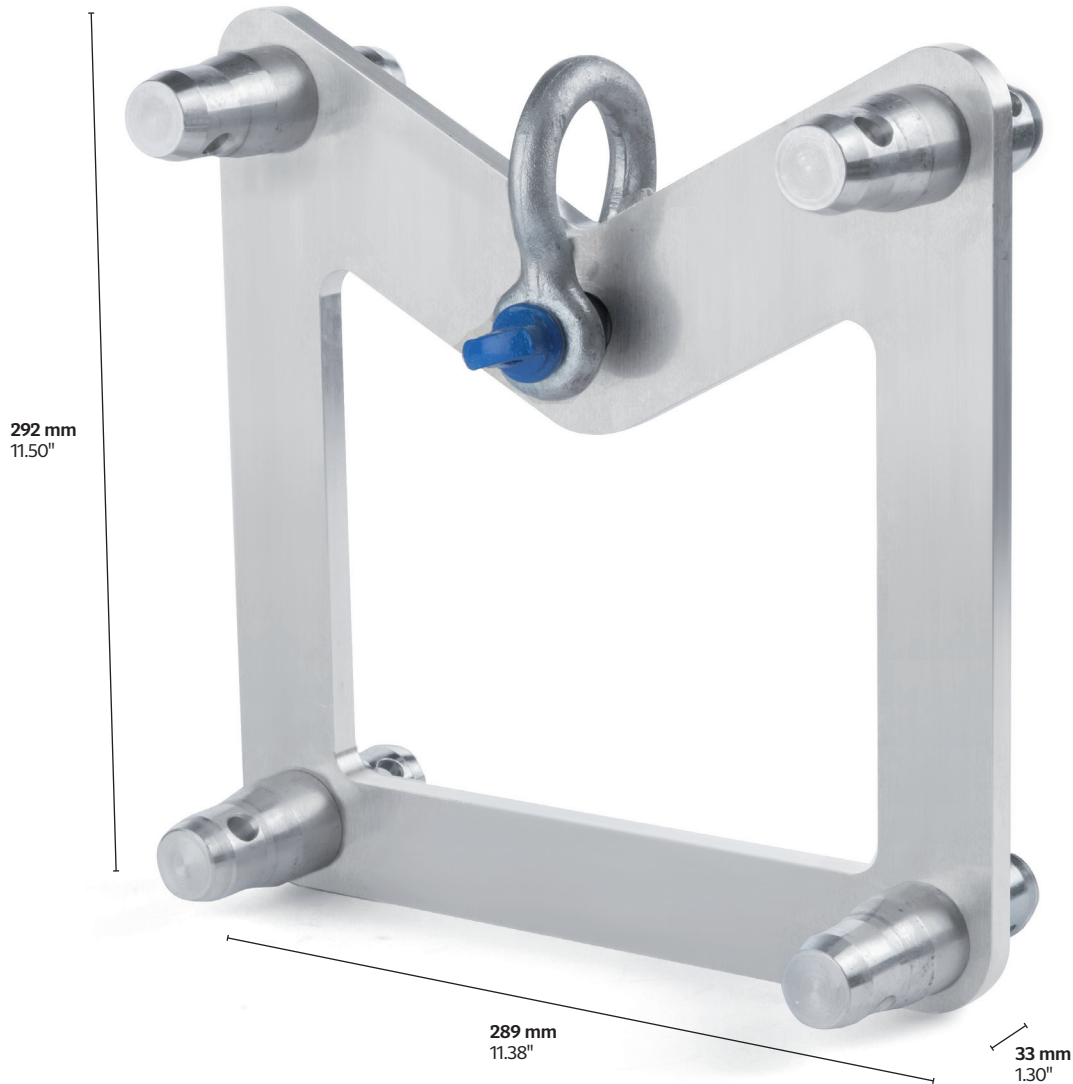
# Maximum headroom when hanging your truss

The MILOS Hanging Plate QTB allows for the horizontal hanging of MILOS 290 and 390 series quattro truss at height. Thanks to its unique "drop hook" design, you experience no loss of headroom so your truss can be lifted as high as possible.

- „Drop Hook“ design for maximum headroom
- Complies with DGUV 17 for using with loads above people (double safety factor)
- CE certified in accordance with directive 2006/42/EC
- Compatible with MILOS 290 and 390 series truss



# HANGING PLATE QTB



### Technical specifications:

<b>Product code:</b>	<b>Hanging-Plate-QTB</b>	
<b>Weight:</b>	3.5 kg	7.72 lbs
<b>Working Load Limit:</b>	1000 kg (DGUV 17 / BGV C1)	2205 lbs (DGUV 17 / BGV C1)
<b>Material:</b>	Aluminium Alloy EN-AW 6082 T6	