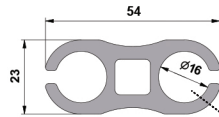


# Keder Profiles

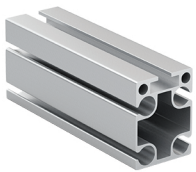
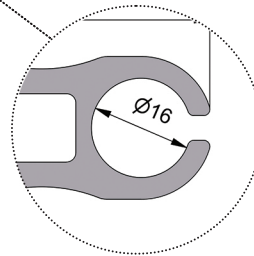
- custom profile with optimized strength to weight ratio
- incl. channel 31x10 mm for M12 hammerhead bolts
- max. point load in channel 600 kg
- internal connectors for all rectangle profiles available
- standard length 4 m
- other lengths and custom machining on request
- profile includes drilling line marked in side flanges for ease of fabrication



Profile  
23x54 mm



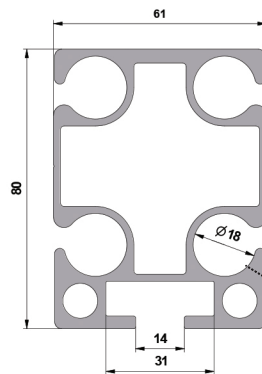
- Shotgun profile
- Intened to be welded directly on the truss



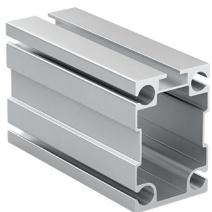
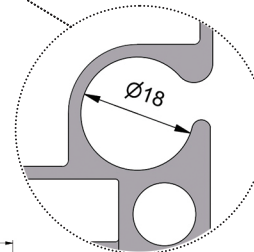
Profile  
80x61mm



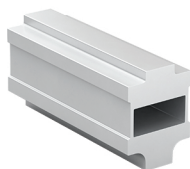
Connector  
for profile  
80x61mm



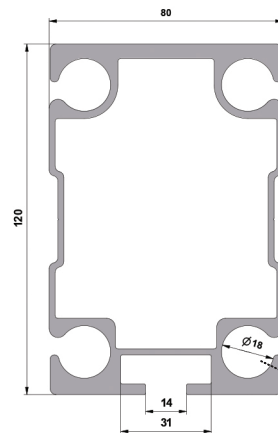
- For short span (up to 4 m) between keders
- Great for covering scaffold structures
- Channel for T-Bolt included



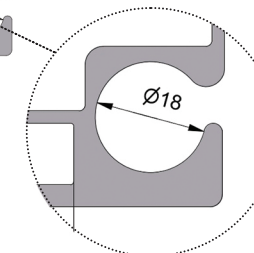
Profile  
120x80mm



Connector  
for profile  
120x80mm



- For medium span
- Height up to 8m
- Channel for T-Bolt included

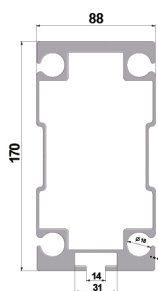




**Profile**  
170x88 mm



**Connector**  
for profile  
170x88mm



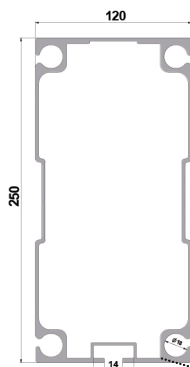
- For a bigger span between keders
- Wall covers up to 10 m height
- Channel for T-Bolt included



**Profile**  
250x120mm



**Connector**  
for profile  
250x120mm



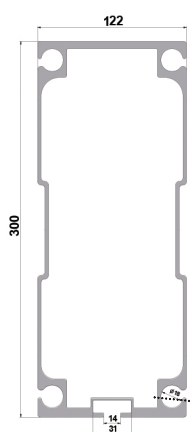
- Wall covers up to 12 m height
- Channel for T-Bolt included



**Profile**  
300x122mm



**Connector**  
for profile  
300x122mm



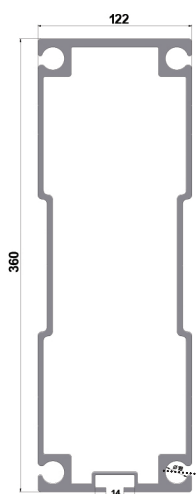
- Wall covers up to 16 m height
- Channel for T-Bolt included



**Profile**  
360x122 mm



**Connector**  
for profile  
360x122mm



- Wall covers up to 19 m height
- Channel for T-Bolt included