

xStage S8 Easy & Light

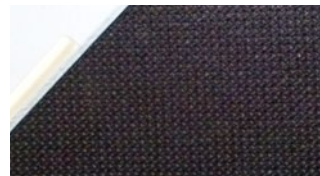


xStage S8 Light combines two features in one, simplicity when assembly and heavy duty loading for any stage application. S8 Light platform has closed corners with integrated plastic connectors for easy and quick connection when building large platforms and time is essential.

S8 Light comes with outdoor plywood deck or honeycomb deck. A vast range of accessories are available for any platform project.

S8 xSTAGE

dimensions	2000 x 1000 mm	78.74" x 39.37"
height	adjustable up to: 1500 mm	59.06"
max. load	750 kg/m ²	153.6 lbs/ft ²
top	plywood: 15 mm	0.59"
weight	35 kg	77.16 lbs
storage height	100 mm	3.94"
platform material	plywood, plexi-glass, composite honeycomb	
special surface	possible	
special sizes	possible	



Outdoor Plywood



Plexiglass



Honeycomb



Legs variability



Quick integrated PVC connector



Plug IN leg system

Variability,
Loading capability
Quick and Easy Installation