

MILOS MRO

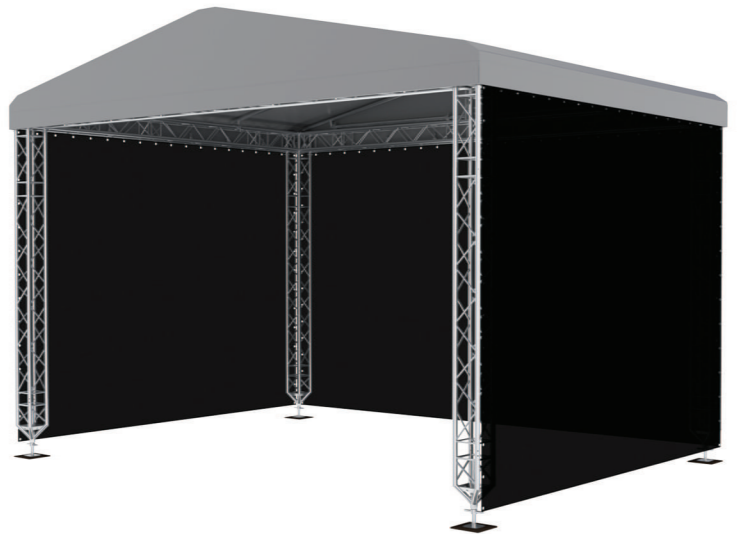
No Guy Wires Roofs



The MILOS MRO NGW 6x5m aluminium roof incorporates our latest HD Multi-Cube, eliminating the need for any wires or corner braces for this set-up. Using HD Multicube in the construction of this roof allows loading capacity of up to 30 kg /m plus 200kg for the PA. Great size, simple set-up, no hassle.

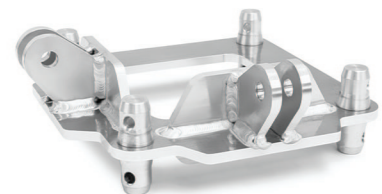
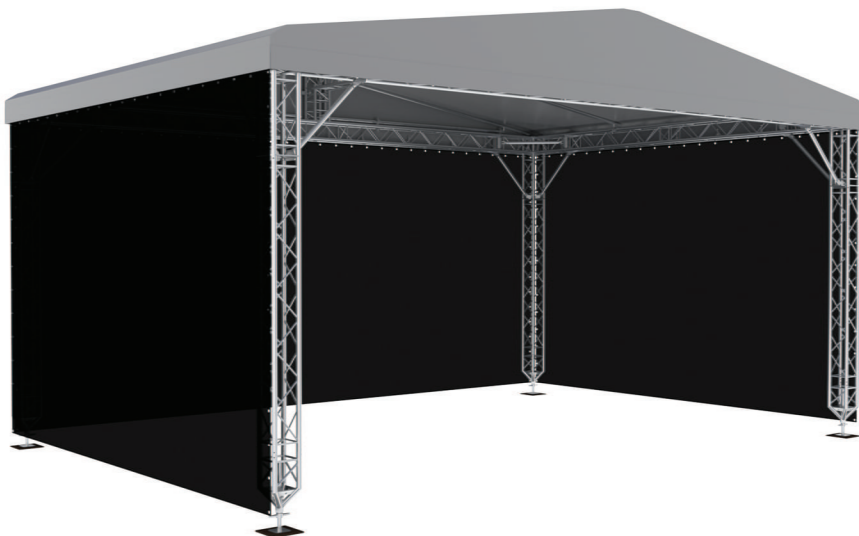
MRO No Guy Wire Roof 6x5m

The MILOS MRO NGW 6x5m aluminium roof incorporates our latest HD Multi-Cube eliminating the need for any wires or corner braces for this set-up. Using HD Multicube in the construction of this roof allows a loading capacity of up to 30 kg /m plus 200kg for the PA. Great size, simple set-up, no hassle.



MRO No Guy Wire Roof 8x6m

The MILOS MRO NGW 8x6m aluminium roof requires NO internal wind bracing wires within its construction due to the use of the innovative Corner Brace HD. The special diagonal brace creates a rigid and stable construction. The adjustable spindle base provides a wide range of adjustment for uneven surfaces. The innovative Corner Brace HD, enables a respectable loading capacity for small / medium size events (front and back truss 30kg/m, side truss 25kg/m, ridge 10kg/m plus 200kg for the PA). Using our Milos M290 QTVU in this roof allows loading capacity up to 60kg/m plus 300kg per PA).



Corner Brace HD